

10/30/21, 10:55 AM

Sotheby's International Realty Canada Mail - Prime Retail Available at SoBa!

Frank Farhangi, Broker, SVP Sales, Phone: +1-647-296-5489



Frank Farhangi <ffarhangi@sothebysrealty.ca>

---

## Prime Retail Available at SoBa!

1 message

---

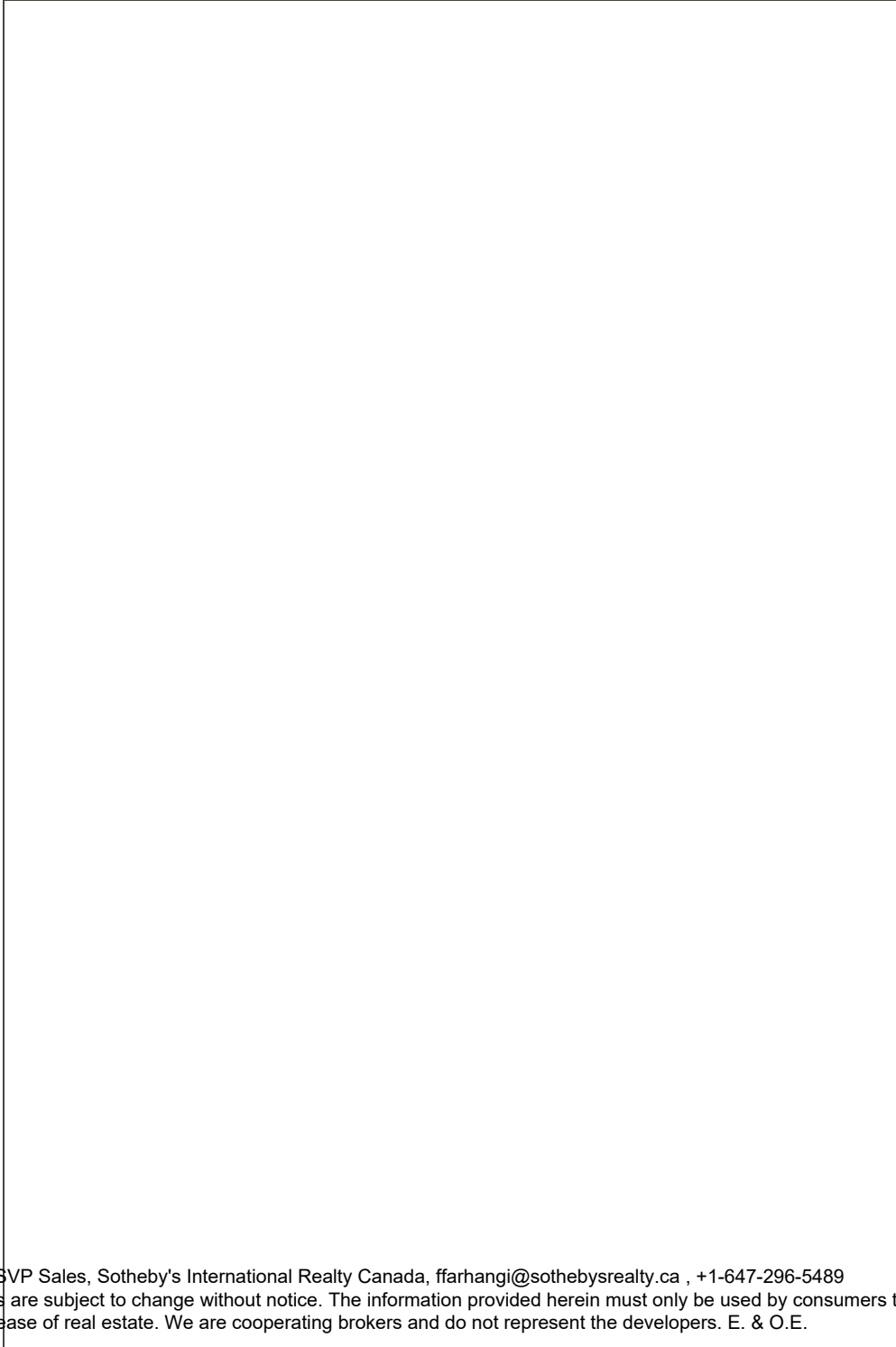
**Lamb Development Corp.** <info@sobaottawa.com>

Thu, Oct 28, 2021 at 1:19 PM

Reply-To: info@sobaottawa.com

To: ffarhangi@sothebysrealty.ca

[If you are having trouble reading this message, please click here to view it in your browser](#)



Frank Farhangi, Broker, SVP Sales, Sotheby's International Realty Canada, ffarhangi@sothebysrealty.ca , +1-647-296-5489

\*Prices and specifications are subject to change without notice. The information provided herein must only be used by consumers that have a bona fide interest in the purchase, sale or lease of real estate. We are cooperating brokers and do not represent the developers. E. & O.E.

**SoBa.**  
Ottawa

**PRIME**  
**RETAIL**  
**FOR LEASE**  
**OR SALE**

Frank Farhangi, Broker, SVP Sales  
\*Prices and specifications are subject to change without notice.  
in the purchase, sale or lease of the property.

that have a bona fide interest



● **8,071 SQ.FT.**

● **Just \$551/PSF**

Frank Farhangi, Broker, SVP Sales  
 \*Prices and specifications are subject to change without notice.  
 in the purchase, sale or lease of real estate.

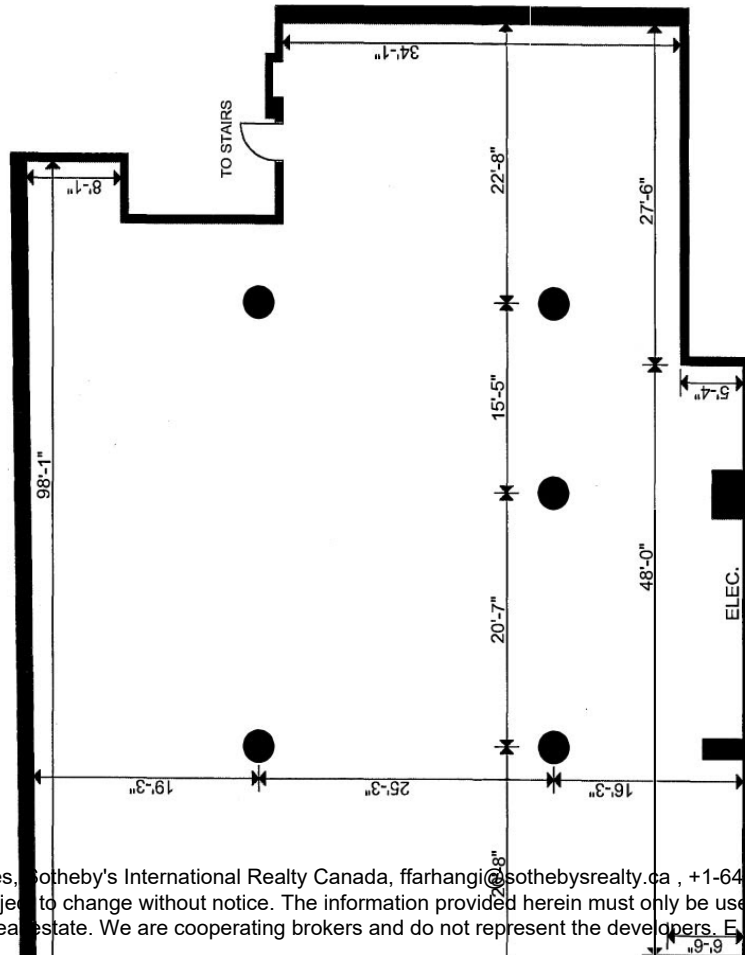


Sotheby's International Realty  
 Canada Mail - Prime Retail Available at SoBa!

that have a bona fide interest

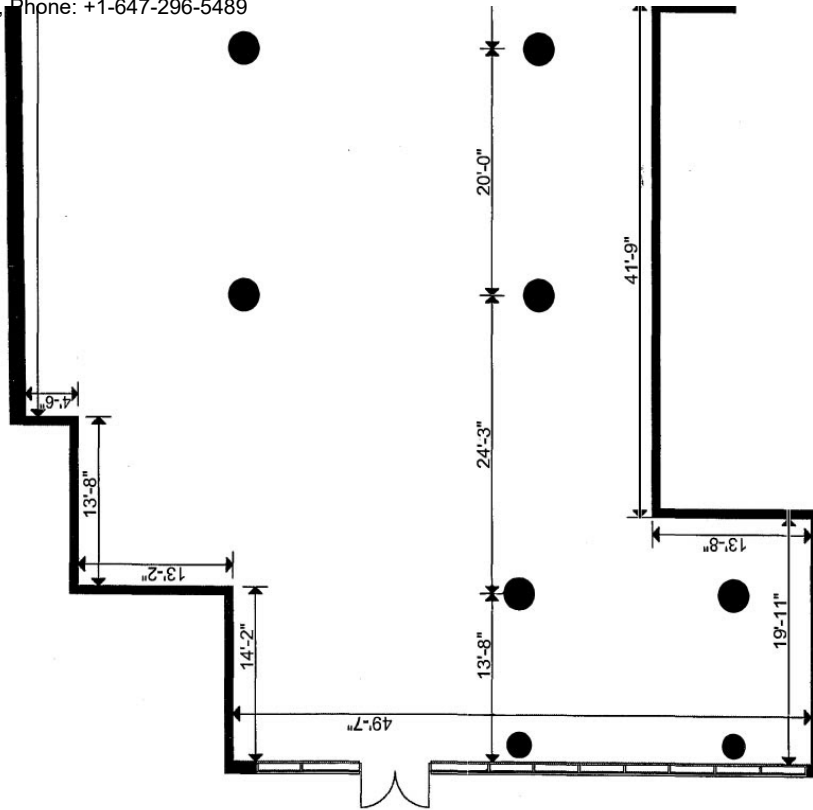
- **6 parking spots**
- **Walking distance** to transit, Parliament Hill, Downtown and The Glebe
- **Spectacular** design and architecture

**\$4,450,000**



Frank Farhangi, Broker, SVP Sales, Sotheby's International Realty Canada, ffarhangi@sothebysrealty.ca, +1-647-296-5489

\*Prices and specifications are subject to change without notice. The information provided herein must only be used by consumers that have a bona fide interest in the purchase, sale or lease of real estate. We are cooperating brokers and do not represent the developers. F. & O.E.



# VIEW FLOOR PLAN



**BOOK YOUR VIEWING  
TODAY!**

**SoBaOttawa.com**

For more information contact  
**info@sobaottawa.com | 613.257.8887**

DEVELOPED BY



EXCLUSIVE BROKER

**BRAD J. LAMB  
REALTY INC.**

Real Estate Brokerage

10/30/21, 10:55 AM

Sotheby's International Realty Canada Mail - Prime Retail Available at SoBa!

Frank Farhangi, Broker, SVP Sales, Phone: +1-647-296-5489

[Unsubscribe](#) | [Forward to a friend](#)

Renderings are an artist's impression. All prices and specifications are subject to change without notice. E.&O.E.

You are receiving this message because you registered on our website or completed a registration form at a presentation centre and agreed to receive email communication from us. If you no longer wish to receive these emails, please unsubscribe or reply to this email with the request and you will be promptly removed.

Brad J. Lamb Realty Inc. [778 King St. West, Toronto, M5V 1N6 ON CA](#)  
[www.bradjlambrealty.com](http://www.bradjlambrealty.com) 416.368.5262

Frank Farhangi, Broker, SVP Sales, Sotheby's International Realty Canada, [ffarhangi@sothebysrealty.ca](mailto:ffarhangi@sothebysrealty.ca), +1-647-296-5489

\*Prices and specifications are subject to change without notice. The information provided herein must only be used by consumers that have a bona fide interest in the purchase, sale or lease of real estate. We are cooperating brokers and do not represent the developers. E. & O.E.