



Frank Farhangi <ffarhangi@sothebysrealty.ca>

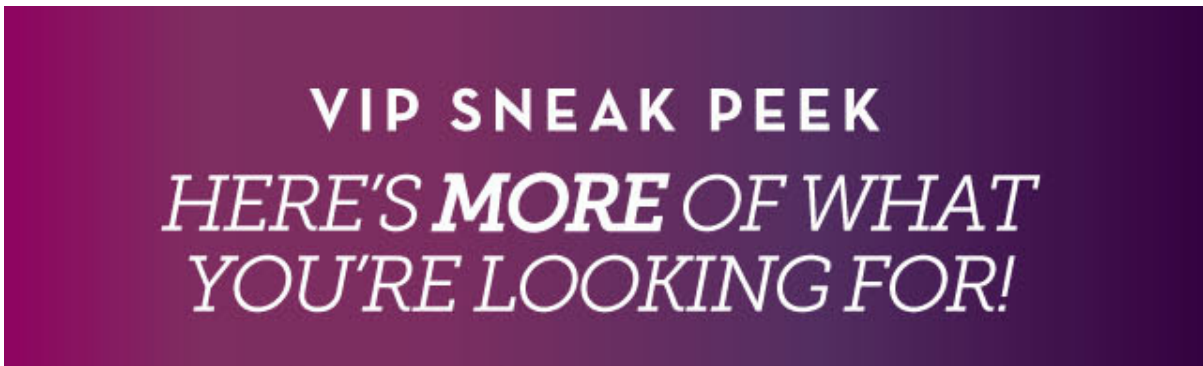
Discover Honeyfield Design Advantages

1 message

Honeyfield Communities <sales@venturabarrie.ca>
Reply-To: Honeyfield Communities <sales@venturabarrie.ca>
To: ffarhangi@sothebysrealty.ca

Fri, Apr 8, 2022 at 5:15 PM

[View this email in your browser](#)



Frank Farhangi, Broker, SVP Sales, Sotheby's International Realty Canada, ffarhangi@sothebysrealty.ca , +1-647-296-5489

*Prices and specifications are subject to change without notice. The information provided herein must only be used by consumers that have a bona-fide interest in the purchase, sale or lease of real estate. We are cooperating brokers and do not represent the developers. E. & O.E.

ADVANTAGES

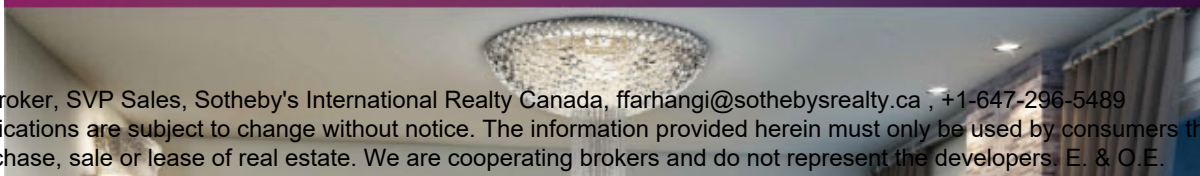
DISCOVER THE INSPIRING FEATURES DESIGNED TO IMPROVE
THE WAY YOU LIVE LIFE AT VENTURA EAST

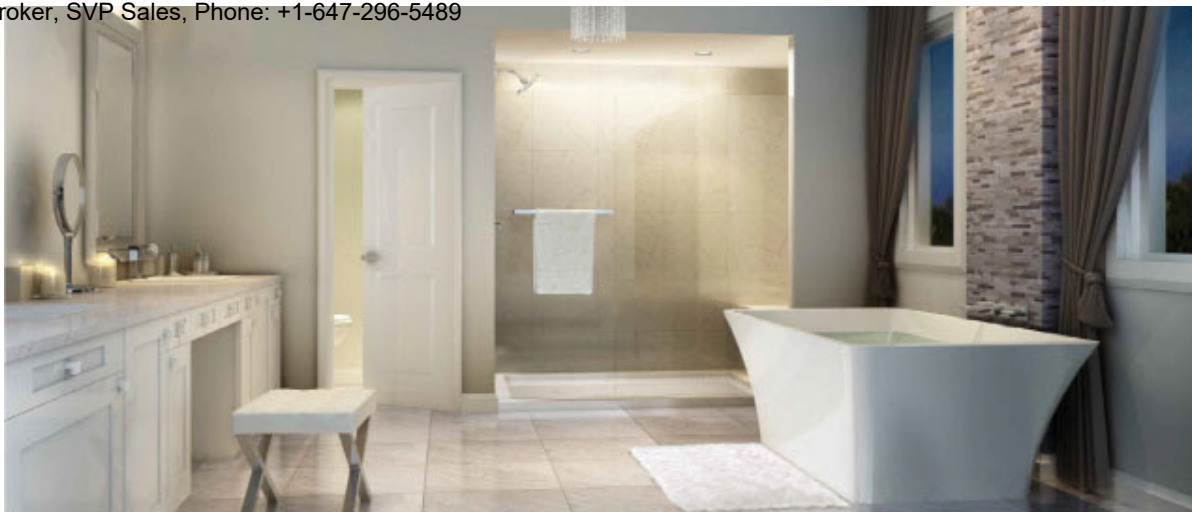


MORE STYLE LIFE-STYLED LIVING SPACES



MORE OPTIONS FINISHED BASEMENT SUITES





MORE LUXURY SPA-INSPIRED ENSUITES

INTRODUCING PHASE 1 COLLECTION OF

Feature-Rich Premium Singles and Semis

Download Siteplan &
Floorplans Below



25'
SEMI DETACHED
COLLECTION
—
FLOORPLANS

Download



33'
DETACHED
COLLECTION
—
FLOORPLANS

[Download](#)



38'
DETACHED
COLLECTION
—
FLOORPLANS

[Download](#)



40'
DETACHED
COLLECTION
—
FLOORPLANS

[Download](#)



COMMUNITY
SITEPLAN

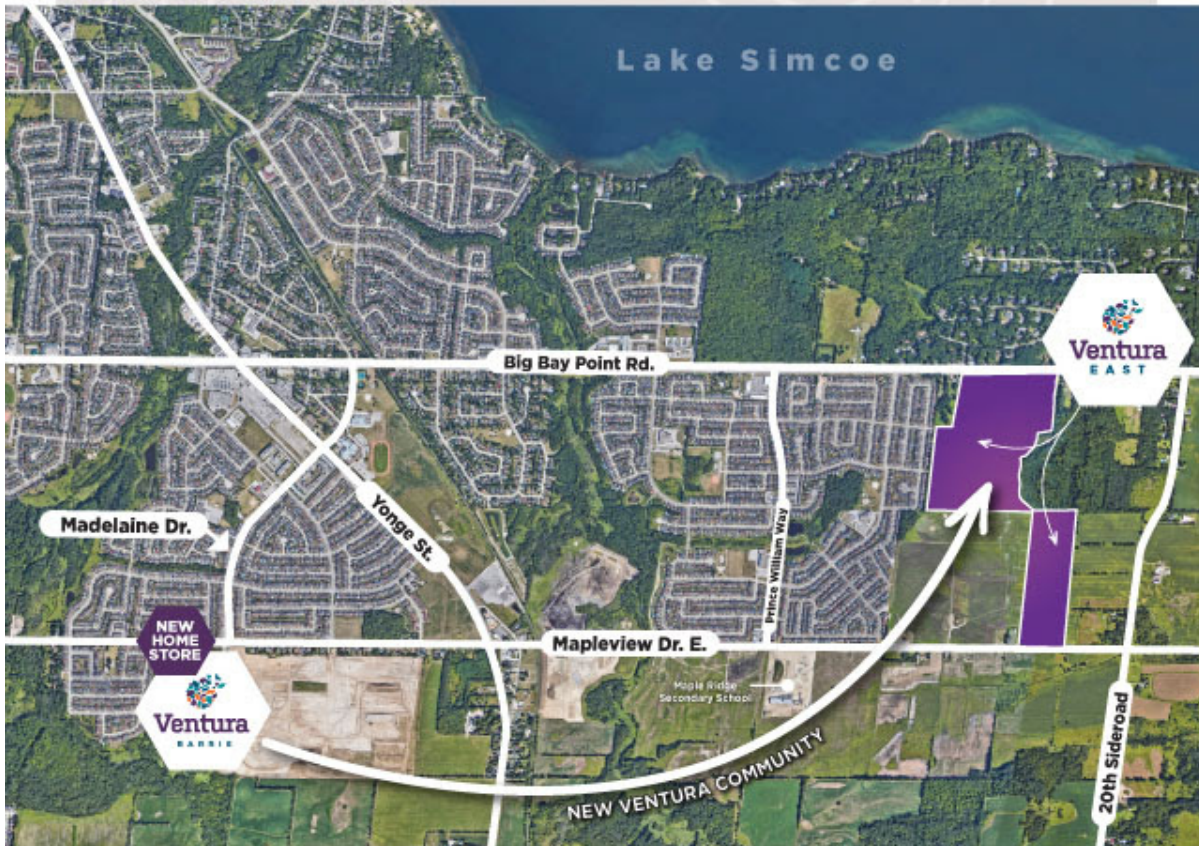
[Download](#)



MORE EXCITING NEWS TO COME!
LOOK FOR OUR NEXT VIP UPDATE
IN YOUR INBOX

NEW HOME STORE LOCATION MAP

515 Mapleview Drive East, Barrie





Copyright © 2022 Honeyfield Communities, All rights reserved.

You are receiving this email because you opted in to the Honeyfield Communities mailing list.

Our mailing address is:

Honeyfield Communities

[333 Humberline Drive, Toronto, ON, Canada](#)

Toronto, Ontario M9W5X3

Canada

[Add us to your address book](#)

Want to change how you receive these emails?

You can [update your preferences](#) or [unsubscribe from this list](#).

