



Frank Farhangi <ffarhangi@sothebysrealty.ca>

Coming This September - The Whitfield

1 message

Menkes <info@menkes.com>
Reply-To: Menkes <info@menkes.com>
To: ffarhangi@sothebysrealty.ca

Wed, Sep 22, 2021 at 12:20 PM

Residences on Front
View online version.



THE WHITFIELD
RESIDENCES ON FRONT

COMING THIS SEPTEMBER



FRONT + CONNECTED

The Whitfield is Front + Connected. Residents here enjoy a short walk to the Premier Mobility Hub at Union Station,

Frank Farhangi, Broker, SVP Sales, Sotheby's International Realty Canada, ffarhangi@sothebysrealty.ca, +1-647-296-5489

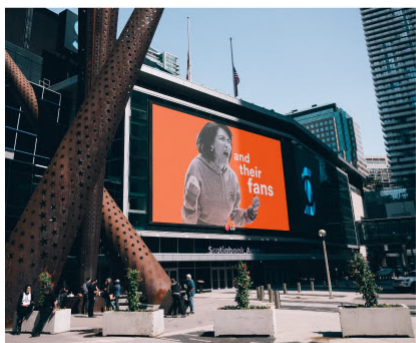
*Prices and specifications are subject to change without notice. The information provided herein must only be used by consumers that have a bona fide interest in the purchase, sale or lease of real estate. We are cooperating brokers and do not represent the developers. E. & O.E.



504 KING EAST STREETCAR



UNION STATION



PATH

30 KM underground pedestrian network and shopping complex
Connected to **80** buildings, **1,200** shops and services, **6** subway stations

Tier 1 transit hub
Access multiple regional systems
UP Express to Pearson Intl. Airport
Line 1 subway, 509 Harbourfront and 510 Spadina streetcars

FUTURE ONTARIO LINE



Subway stop - Corktown
Only **370 meters** away
16 KM subway line
\$11 billion in funding

**REGISTER
MENKES.COM**

Information subject to change. E. & O.E.



[Click here to unsubscribe.](#)