



Frank Farhangi <ffarhangi@sothebysrealty.ca>

A closer look at Tridel Hollyburn's Westerly 2.

1 message

Tridel <westerly@tridel.com>

Tue, Oct 26, 2021 at 3:06 PM

Reply-To: Tridel <westerly@tridel.com>

To: Frank Farhangi <ffarhangi@sothebysrealty.ca>



Frank Farhangi, Broker, SVP Sales, Sotheby's International Realty Canada, ffarhangi@sothebysrealty.ca , +1-647-296-5489

*Prices and specifications are subject to change without notice. The information provided herein must only be used by consumers that have a bona fide interest in the purchase, sale or lease of real estate. We are cooperating brokers and do not represent the developers. E. & O.E.

WESTERLY 2

A STUNNING NEW LIFESTYLE OPPORTUNITY.

The second phase in Tridel Hollyburn's successful Westerly community in vibrant new Etobicoke, Westerly 2 presents a premium lifestyle in a modern condominium tower. This new 27-storey community of 354 meticulously crafted suites features many of the layouts that made Westerly such a success.

1-, 2- and 3-bedroom options range from 521 – 872 square feet, with 9' ceilings, striking chrome fixtures, elegant granite or quartz countertops, and energy-efficient appliances. Along with exclusive amenities such as a co-working lounge, fitness and yoga studios, and pet wash – and exceptional connectivity to area shops, restaurants, golf courses and parks – Westerly 2 offers elevated living.

Please confirm your attendance at the Westerly 2 Webinar Event, where we'll discuss this exciting new community in further detail.

DATE

Saturday, November 6, 2021

TIME

11:00 AM

Reserve your webinar spot now to secure priority access.

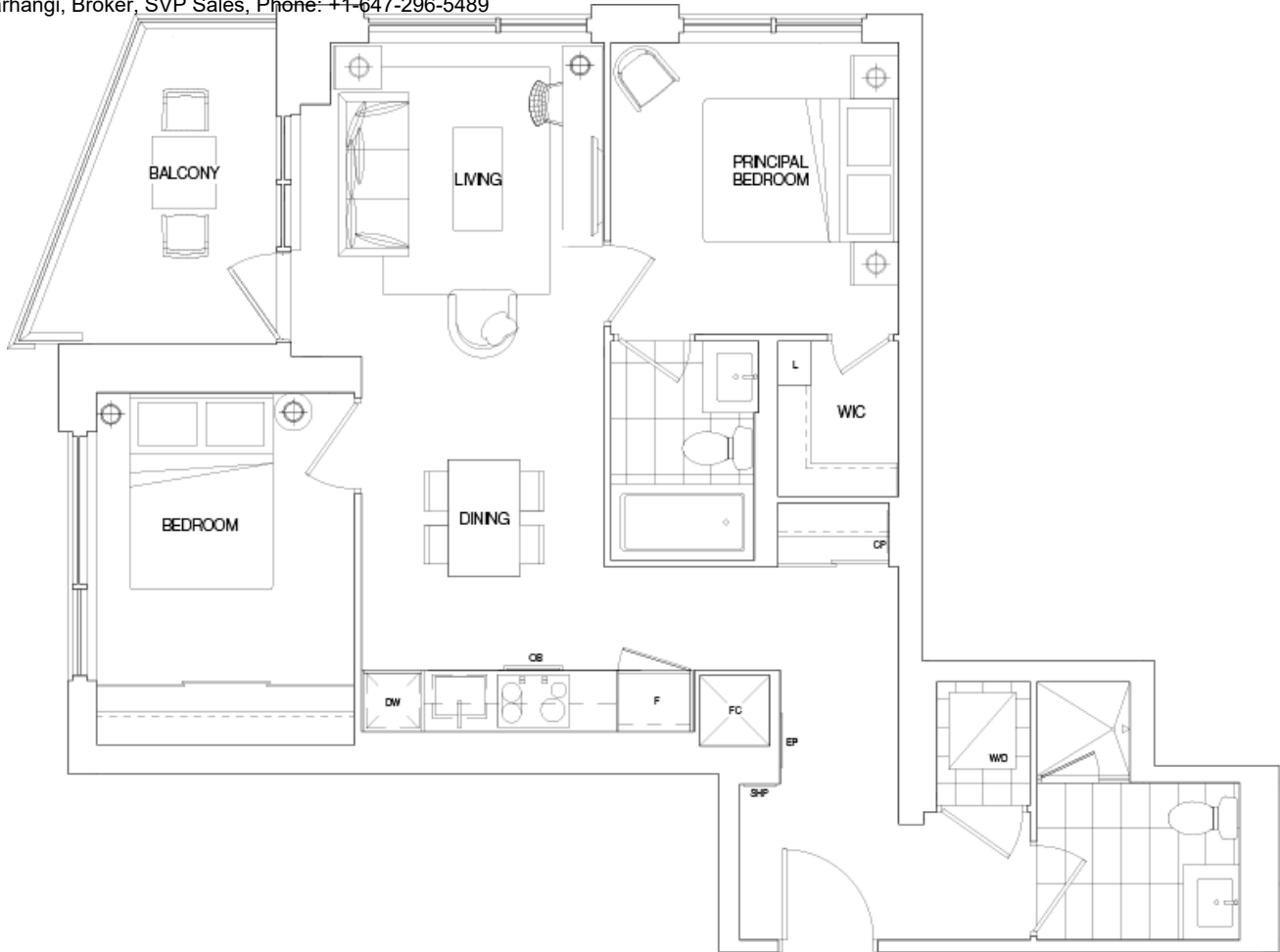
RESERVE NOW

Take a sneak peek at our featured suite.

2D

834 SQ. FT.

**2 BEDROOMS 2 BATHROOMS
SOUTHWEST FACING**




DISCOVER THE NEW ETOBICOKE.



GREEN BUILDER OF THE YEAR
 DIVERSITY, EQUITY AND INCLUSION
 BEST HIGH-RISE BUILDING DESIGN
 ONTARIO HOME BUILDER OF THE YEAR

tridel.com

Awarded by the Ontario Home Builders Association and by the Building Industry and Land Development Association.

*Prices and specifications are subject to change without notice. Contact a sales representative for full details. Illustrations are artist's concept. Map not to scale. ©Tridel 2021. ® Tridel and design,  design, Tridel Built for Life and design, Built Green Built for Life and design are registered Trademarks of Tridel Corporation. Tridel Connect is a Trademark of Tridel Corporation. All rights reserved. E.&O.E. October 2021.

This email was sent to ffarhangi@sothebysrealty.ca by Deltera Inc., 4800 Dufferin Street, Toronto, M3H 5S9. ask@tridel.com

If you wish to unsubscribe from receiving commercial electronic messages, please visit the [subscription centre](#) at any time. [Tridel Privacy Policy](#) | [Terms of Use](#)